

DUI FACTS

- Driving Under the Influence (DUI) includes not only alcohol, but any intoxicant, narcotic drug, or other drug producing central nervous system effects – including prescription drugs.
- Alcohol is alcohol, regardless whether it is hard liquor, beer or wine coolers.
- A cold shower or cup of coffee will not sober you up.
- Alcohol affects your physical mobility, and your ability to reason and use good judgment.
- Large amounts of alcohol can do major damage to your heart, liver, stomach, and other critical organs.
- Nobody reacts the same to alcohol. Body weight, time of day, body chemistry, and mental state all affect a person's physical reaction to drinking alcohol.
- Large amounts of alcohol consumed in a short period of time can be lethal not only for you, but for your spouse, your children, your family and your friends. Is it worth the risk?
- If you are going to drink alcohol, ALWAYS assign a designated driver.

UNDER 21? Drinking is Against the Law.

Forty-one percent of fatal crashes involving teenagers occur at night between 9:00 pm and 6:00 am.

In Tennessee

If you are between the ages of 13 and 17 and found to have possessed, consumed, or sold either alcohol or drugs, your driving privilege will be suspended for one year or until age 17, whichever is longer.

If you are between the ages of 18-20, and are convicted of purchasing alcohol, you will lose your driver's license for a period of one year.

DUI COSTS

A single DUI conviction could cost you as much as \$5,000 or more after all fines and fees have been paid.

Potential costs of a DUI conviction include:

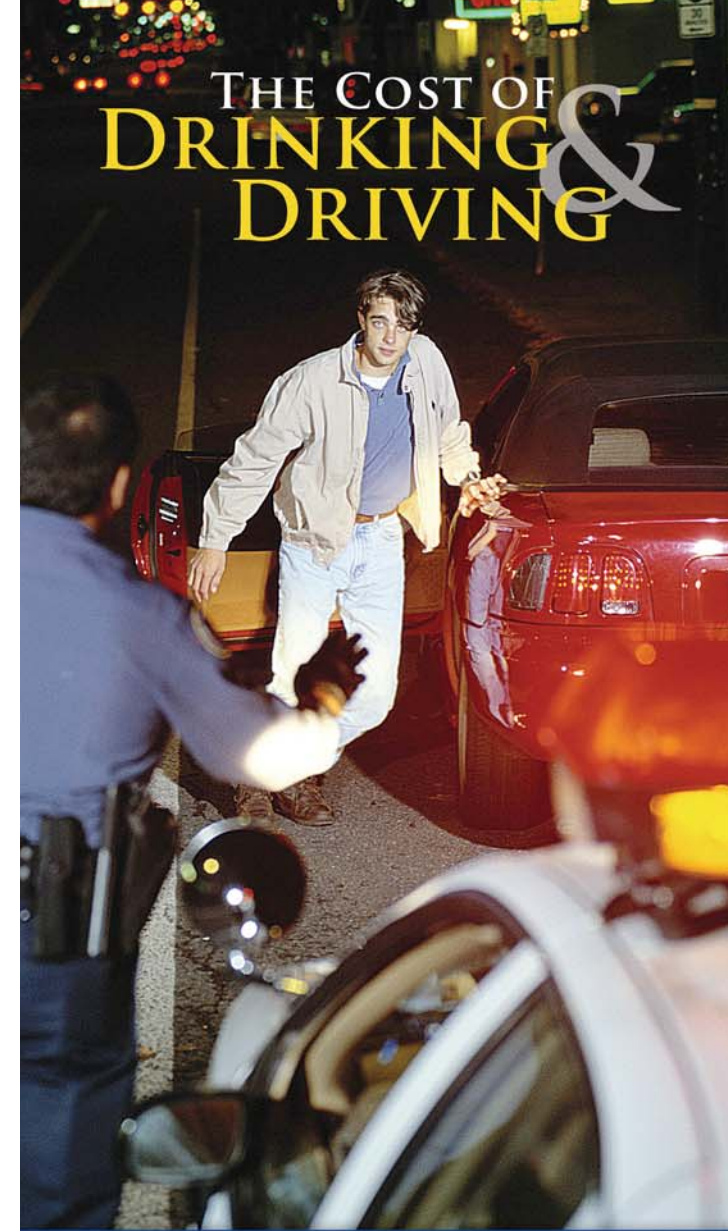
- Fines
- Court costs
- Bail
- Towing and vehicle storage fees
- Attorney fees
- Alcohol education program enrollment
- Driver license reinstatement fees
- Ignition Interlock Program costs
- Higher insurance premiums and SR-22 Form.

Instead of throwing your money away on a DUI conviction, think of all the wonderful things you could buy with \$5,000.

- College tuition
- Family vacation
- Down payments for homes or cars
- Home entertainment system with high definition big screen television
- Pair of season tickets to a professional sports team



Tennessee Department of Safety, Authorization No. 349285, 165,000 copies, August 2005. This public document was promulgated at a cost of \$.11 per copy.



THE COST OF DRINKING & DRIVING

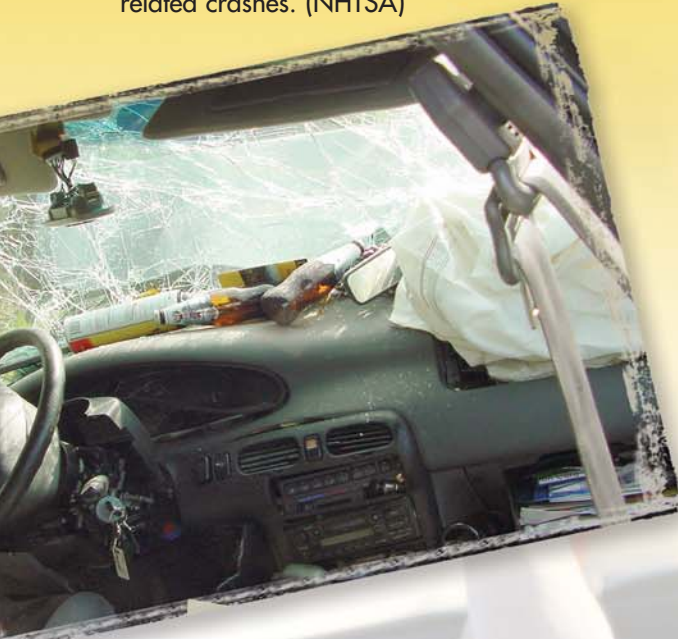
Is It Worth It?



Lose your license, your freedom, your life.

DUI STATISTICS

- Motor vehicle crashes are the leading cause of death among persons between the ages of 3 and 33. (NHTSA)
- Approximately 50% of all children killed in motor vehicle crashes are victims of alcohol-related crashes. (NHTSA)



- In the United States, an average of one person is killed in an alcohol-related crash every 31 minutes. Those deaths represent 40% of all traffic fatalities. (MADD Tennessee)
- About three in every ten Americans will be involved in an alcohol-related crash at some time in their lives. (NHTSA)
- Approximately 32% of all Tennessee roadway fatalities are alcohol-related. (TN FARS)
- An estimated 513,000 people are injured in alcohol-related crashes each year, an average of 59 people per hour or approximately one person every minute. (MADD Tennessee)

DUI - 1ST OFFENSE

Misdemeanor Conviction

Fine: \$350 - \$1,500

Jail Time: 24 hours - 11 Months, 29 Days

Driver's License: Suspended for 1 Year

Community Service: Must remove litter from a state highway for a period of 24 hours while wearing an orange-colored vest bearing the words, "I AM A DRUNK DRIVER."



DUI - 2ND OFFENSE

Misdemeanor Conviction

Fine: \$600 - \$3,500

Jail Time: 45 days - 11 Months, 29 Days

Driver's License: Suspended for 2 Years

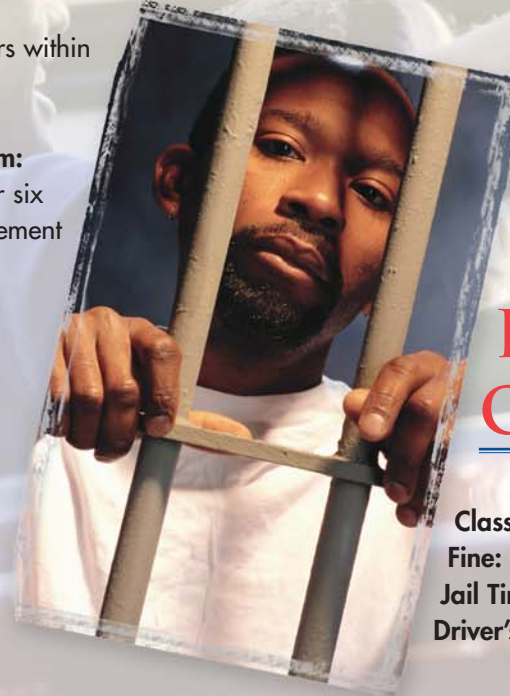
If second conviction occurs within 5 years of the first:

Ignition Interlock Program:

Mandatory enrollment for six months following reinstatement of driver's license.

Loss of Vehicle:

Vehicle subject to seizure and/or forfeiture.



DUI - 3RD OFFENSE

Misdemeanor Conviction

Fine: \$1,100 - \$10,000

Jail Time: 120 days - 11 Months, 29 Days

Driver's License: Suspended for 3-10 Years

DUI - 4TH OFFENSE

Class E Felony Conviction

Fine: \$3,000 - \$15,000

Jail Time: Not Less Than 150 Consecutive Days

Driver's License: Suspended for 5 Years